

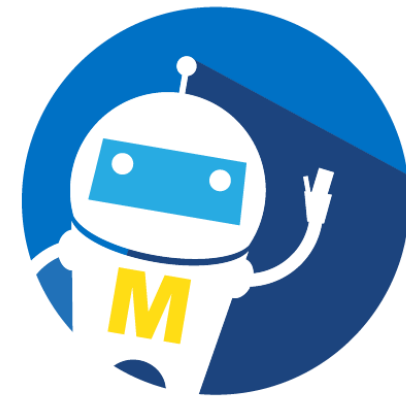
GENUINO 101 WORKSHOP - PREREQUISITES

Workshop title: Genuino 101

Internet of Things Group

Software Installation

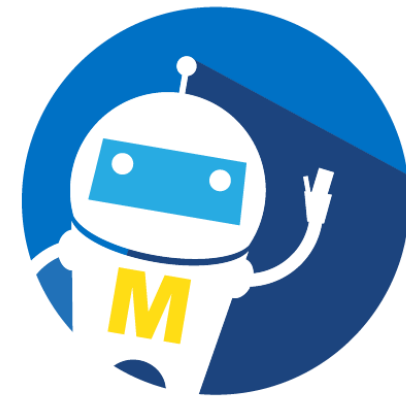
Software Installation – Arduino IDE & Processing



Download the software bundle from the *Workshop Folder* :

<https://goo.gl/B6NMNy>

Installation of Arduino IDE 1.6.9



1. Double click on the Arduino-1.6.9-windows.exe in the Workshop Folder you downloaded. (*\\Genuino_101_Workshop\Genuino 101 Workshop\Software Bundle\Arduino _ Processing IDE*)



2. Go through the installation process and you can find your Arduino.exe at **C:\Program Files (x86)\Arduino**

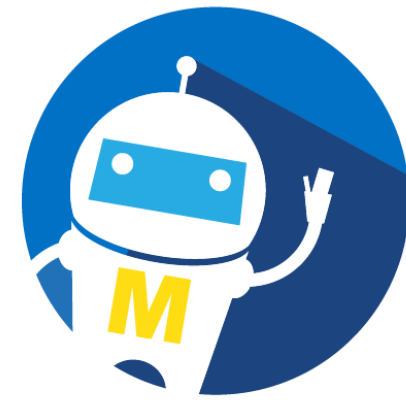
3. Double click it to **Launch Arduino IDE.**

<https://www.arduino.cc/en/Main/Software>

Name

- dist
- drivers
- examples
- hardware
- java
- lib
- libraries
- reference
- tools
- tools-builder
- arduino.exe**
- arduino.l4j.ini
- arduino_debug.exe
- arduino_debug.l4j.ini
- arduino-builder.exe
- libusb0.dll
- msvcp100.dll
- msvcr100.dll
- revisions.txt
- uninstall.exe

Installation of Processing IDE



1. Go to your download directory of Genuino_101_Workshop Folder.

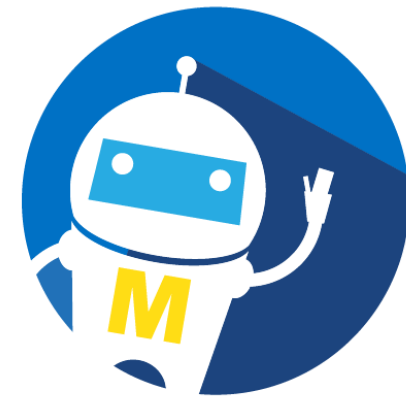
`\Genuino_101_Workshop\Genuino 101 Workshop\Software Bundle\Arduino _ Processing IDE\processing-3.1.1.zip`

2. Unzip the processing-3.1.1.zip .

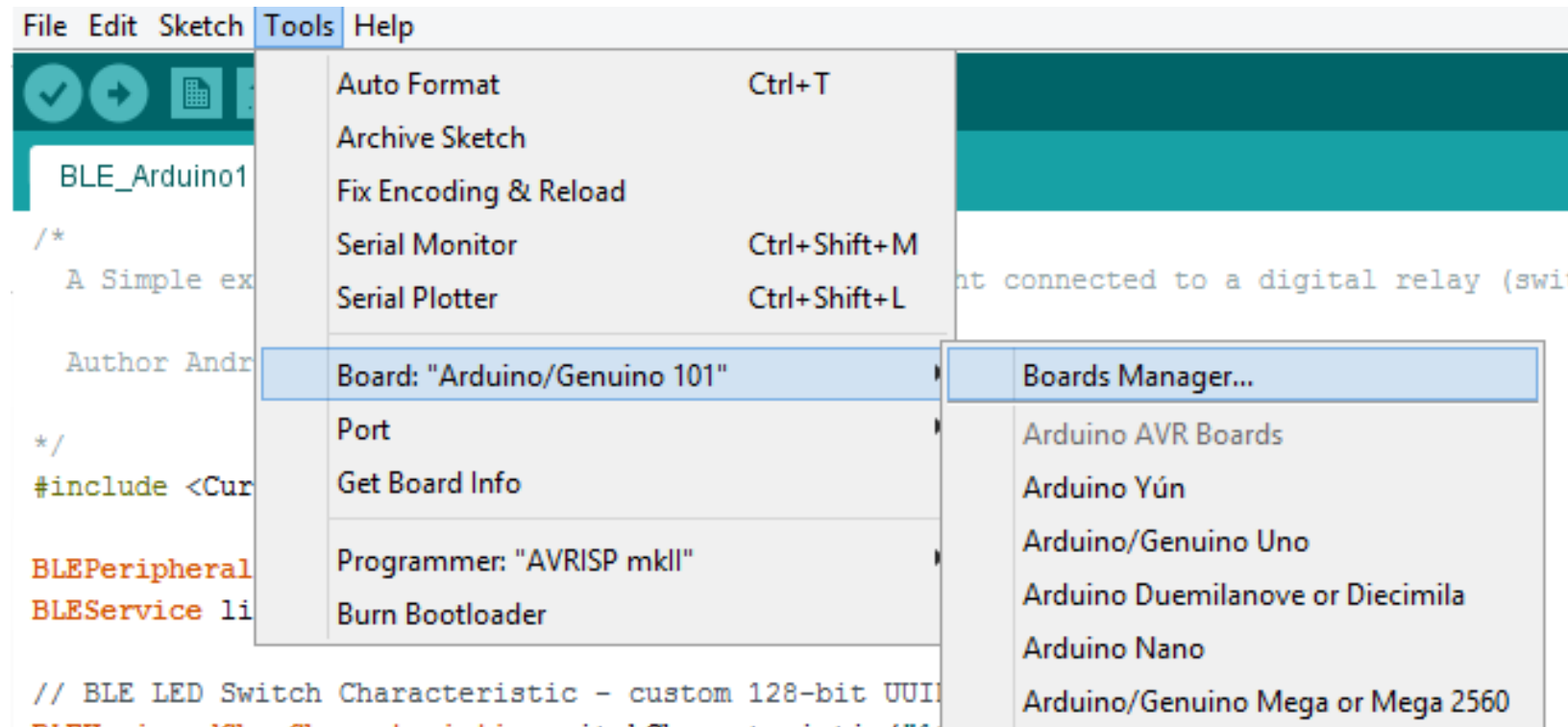
3. You can launch the processing.exe directly fro

core	7/1/2016 5:48 PM	File folder	
java	7/11/2016 10:52 PM	File folder	
launch4j	5/16/2016 6:25 PM	File folder	
lib	7/11/2016 10:53 PM	File folder	
modes	7/1/2016 5:49 PM	File folder	
tools	7/1/2016 5:51 PM	File folder	
processing.exe	7/11/2016 10:52 PM	Application	612 KB
processing-java.exe	7/11/2016 10:52 PM	Application	29 KB
revisions.txt	7/11/2016 10:52 PM	TXT File	313 KB

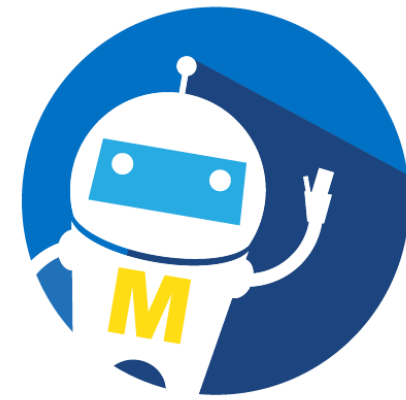
Board Manager – Arduino 101



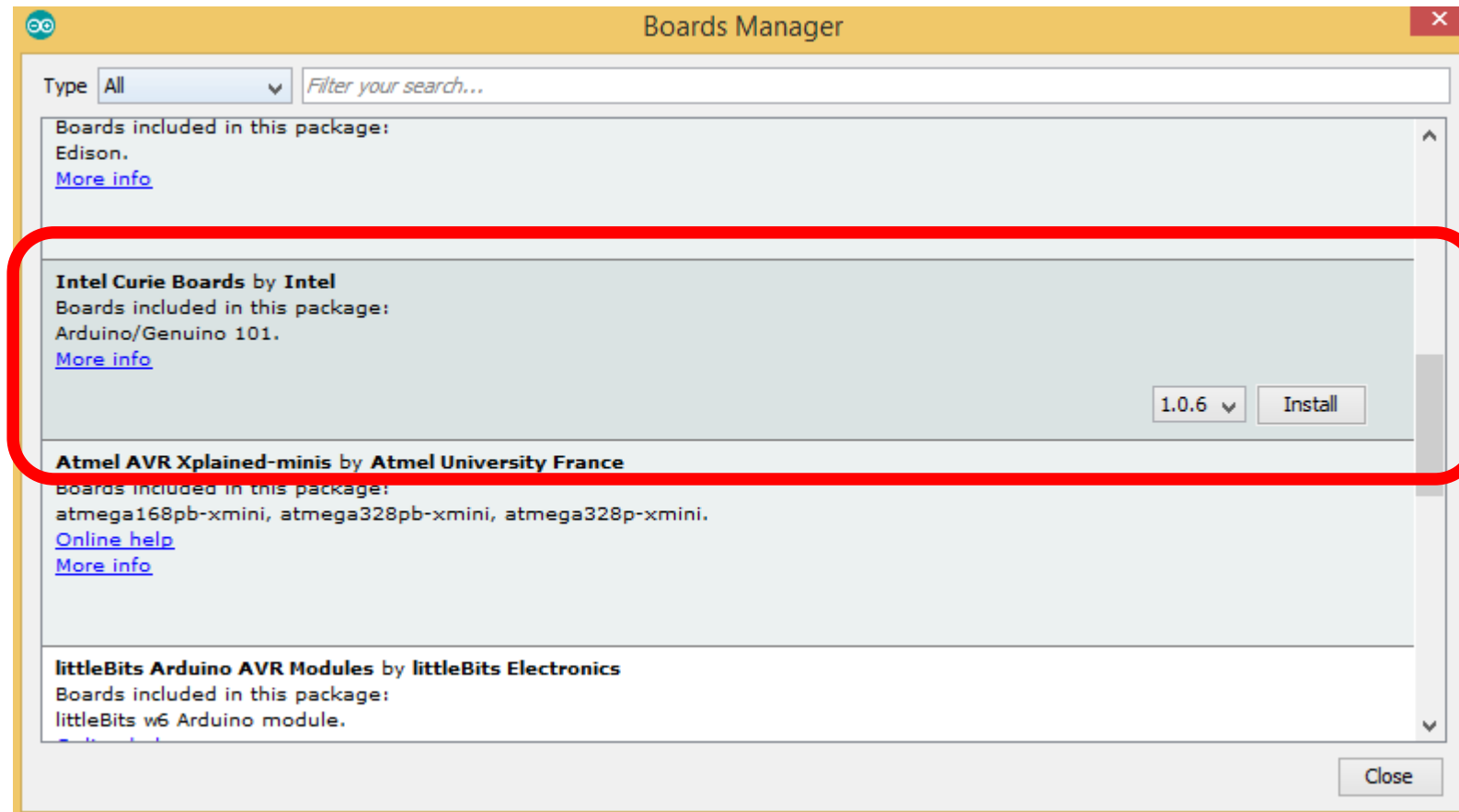
In Arduino IDE, Go to **Tools > Board > Boards Manager**



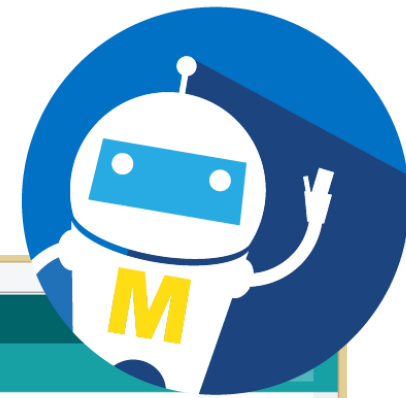
Board Manager – Arduino 101



Search for *Intel Curie Board by Intel* version 1.0.6 and **INSTALL**

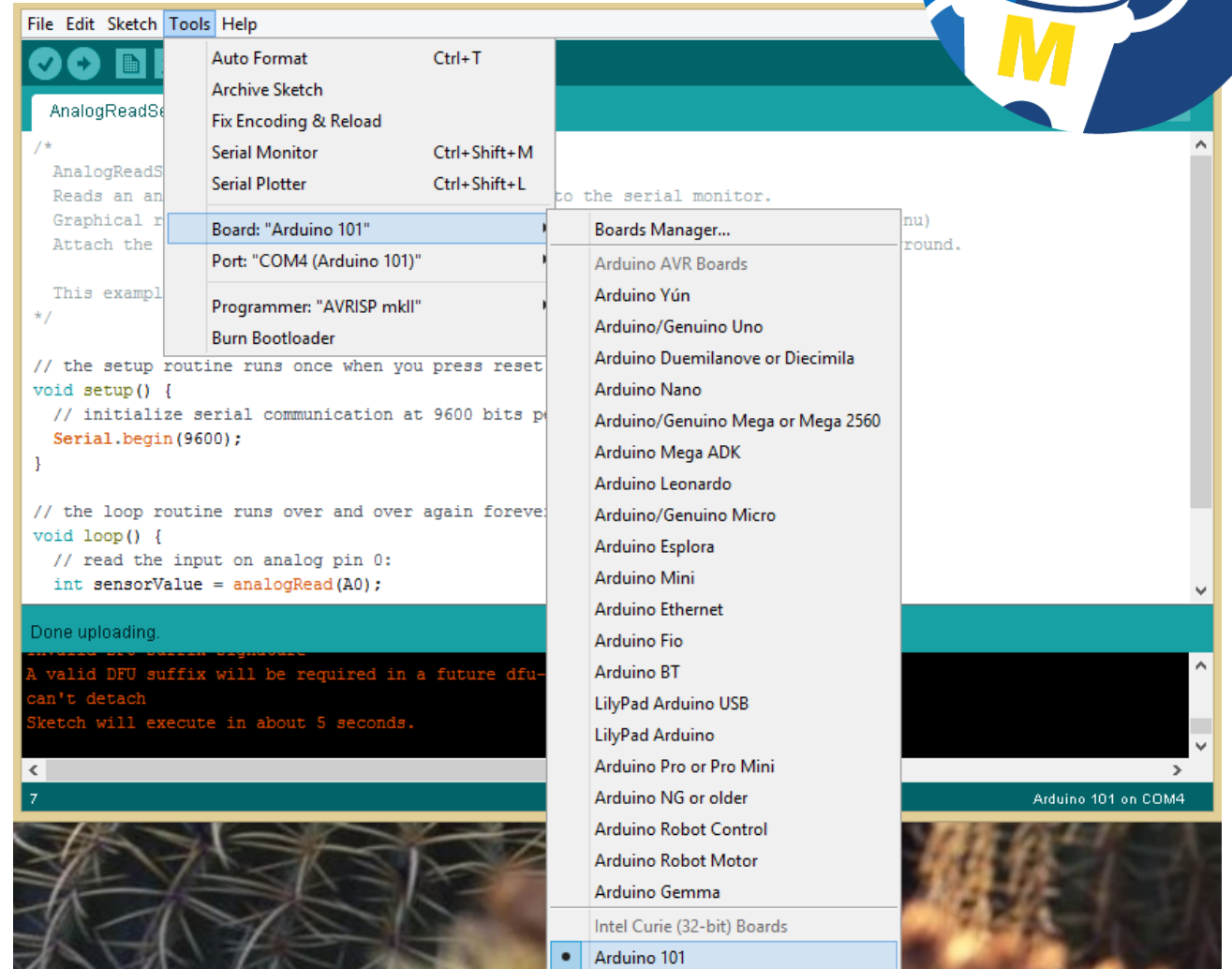


Board Manager – Arduino 101

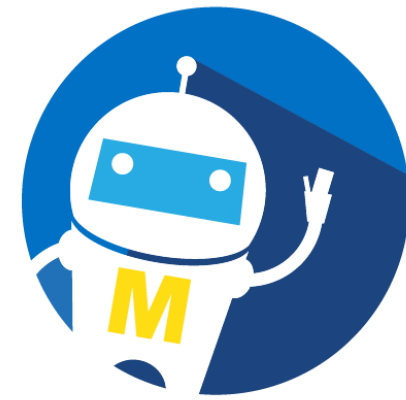


After the installation is complete, you should see a new board “Arduino 101” in the menu:

Please **MAKE SURE** you select **Arduino 101**.

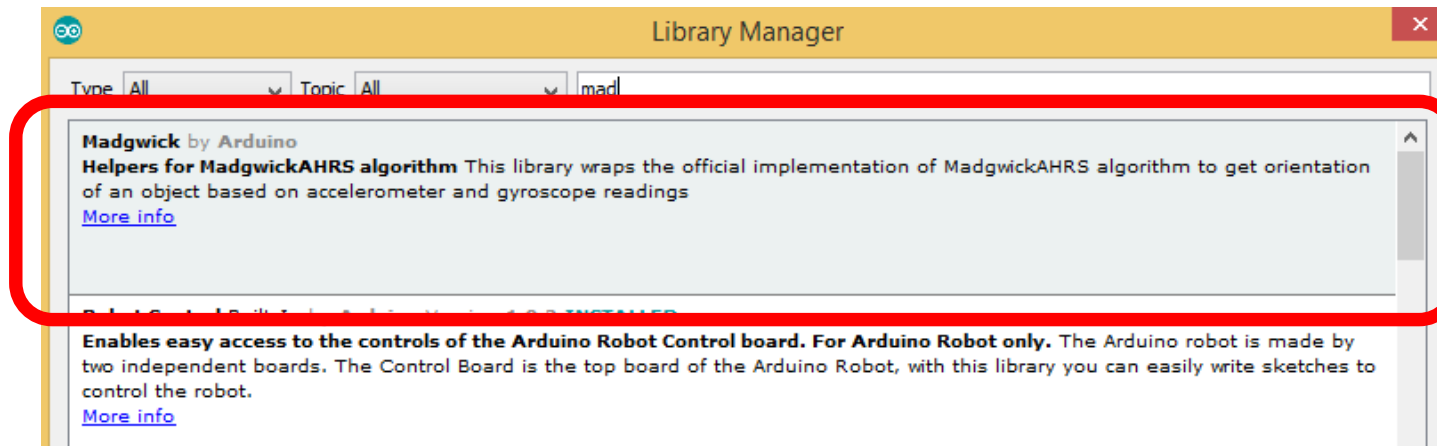


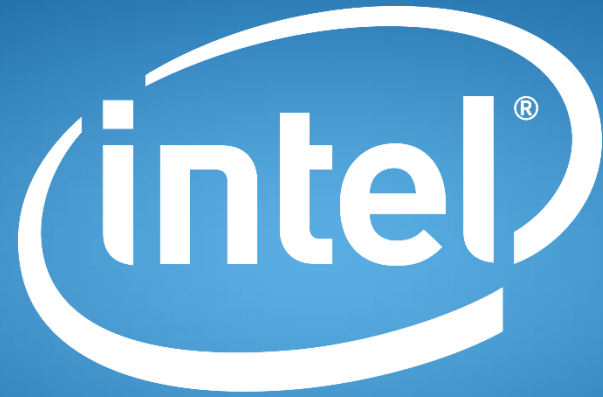
Madgwick library Installation



Install the **Madgwick library** from library manager.

To do this, open the Arduino Software (IDE), go to "**Sketch > Include Library > Manage Libraries**". There you can search 'Madgwick' and install the library directly from there. Please see the libraries installation guide for a more detailed explanation on installing and importing libraries.





experience
what's inside™