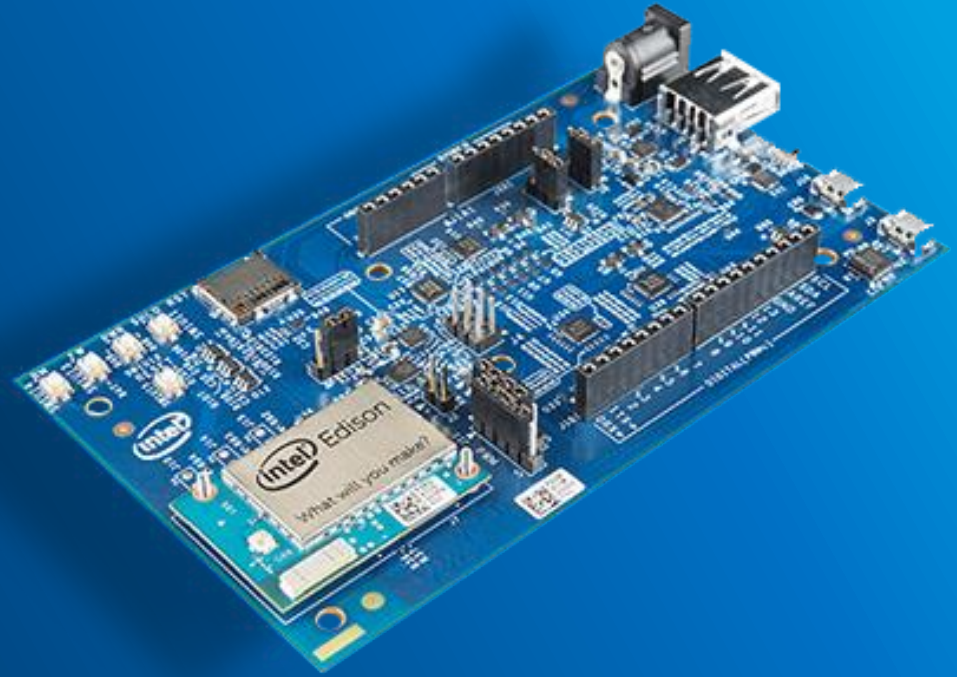


intel Edison



GETTING STARTED

Intel® Edison Setup Guide

Pre-requisite Software Installation

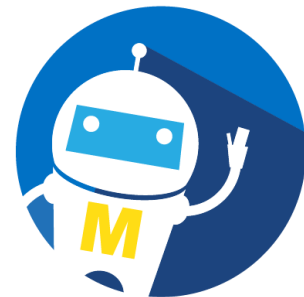
Software Installation

Download the software bundle from the **Workshop Folder**.

Goto <https://goo.gl/ZXBYD7>

SoftwareBundle_Edison101.zip 1 item

SoftwareBundle_Edison101



Download the SoftwareBundle_Edison101.zip to your local HD

Once downloaded, unzip the file to your HD

You should have the following files :

Follow through the steps in sequential order (slide 4 onwards).

SoftwareBundle_Edison101 9 items

Library

arduino-1.6.9-windows.exe

CDM v2.10.00 WHQL Certified.exe

dfu-util-0.9-win64.zip

intel_edison_setup_win_v2016.2.007.exe

IntelEdisonDriverSetup1.2.1.exe

iot-devkit-prof-dev-image-edison-20160606.zip

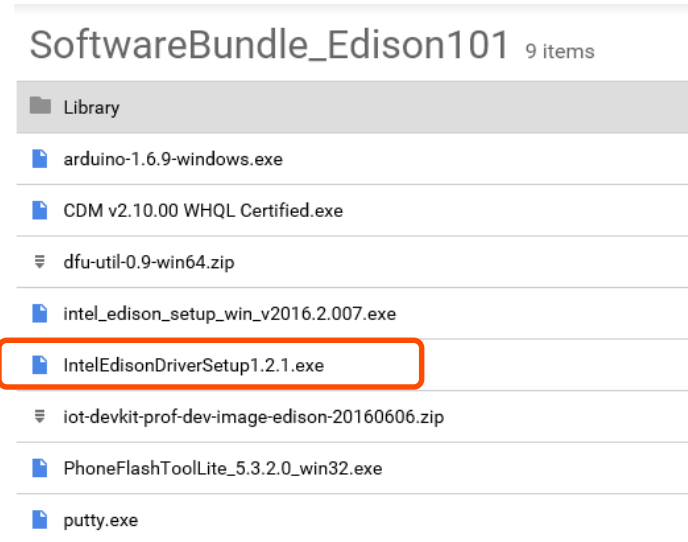
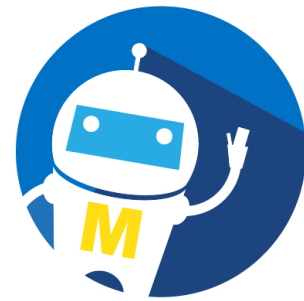
PhoneFlashToolLite_5.3.2.0_win32.exe

putty.exe

Step 1 - Software Installation – Intel Edison Driver

Click on the IntelEdisonDriverSetup1.2.1.exe to install the driver

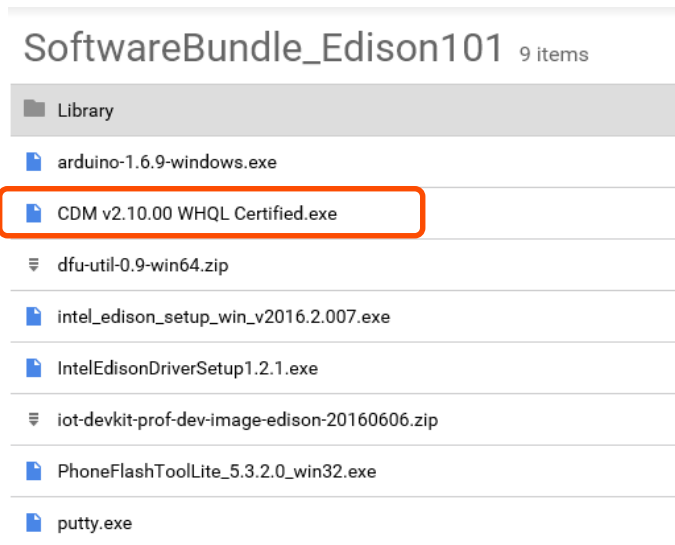
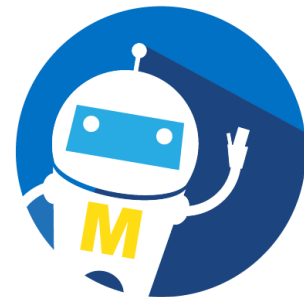
Follow the on-screen instruction



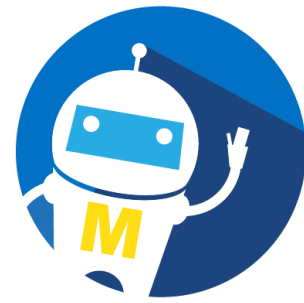
Step 2 - Software Installation – FTDI Driver

Click on the CDM v2.10.00 WHQL Certified.exe to install the driver

Follow the on-screen instruction.



Step 3 - Software Installation – Arduino IDE 1.6.9

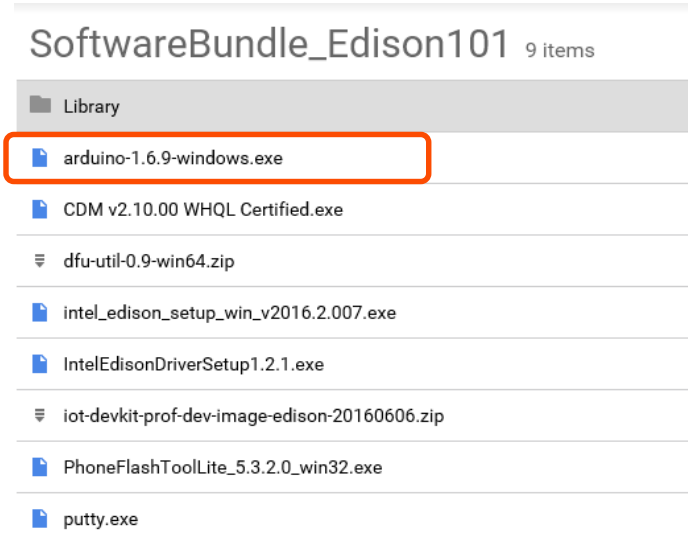


Click on the `Arduino-1.6.9-wondows.exe` to install the IDE

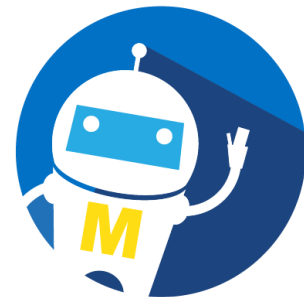
Follow the on-screen instruction.

Go through the installation process and you can find your `Arduino.exe` in `C:\Program Files (x86)\Arduino`

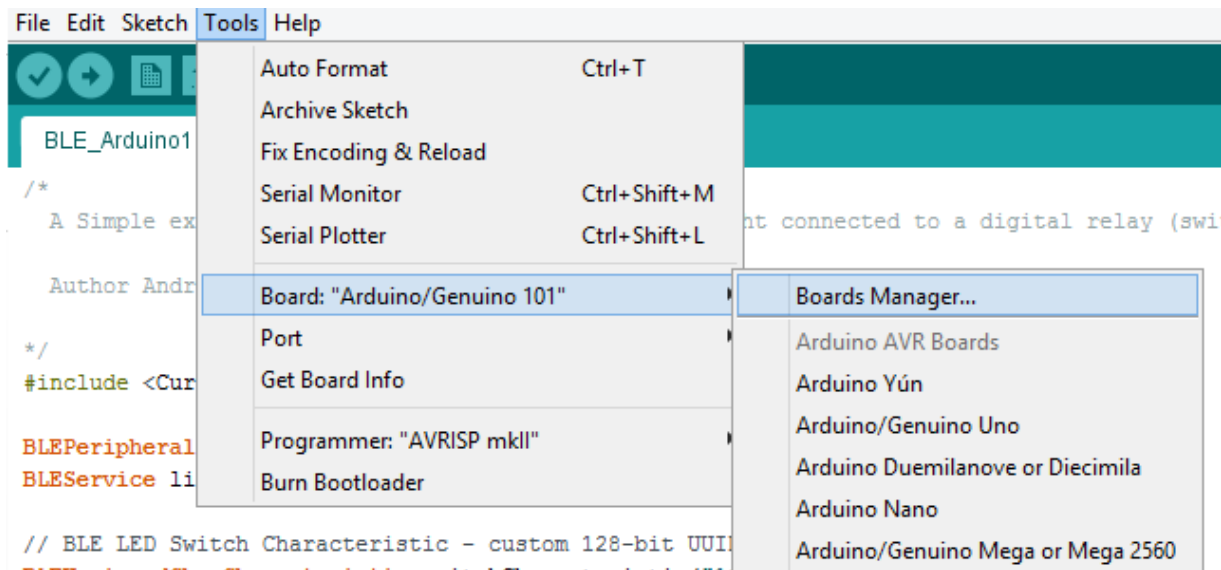
Double click the icon in your Desktop to Launch Arduino IDE.



Board Manager – Setting up for Intel Edison



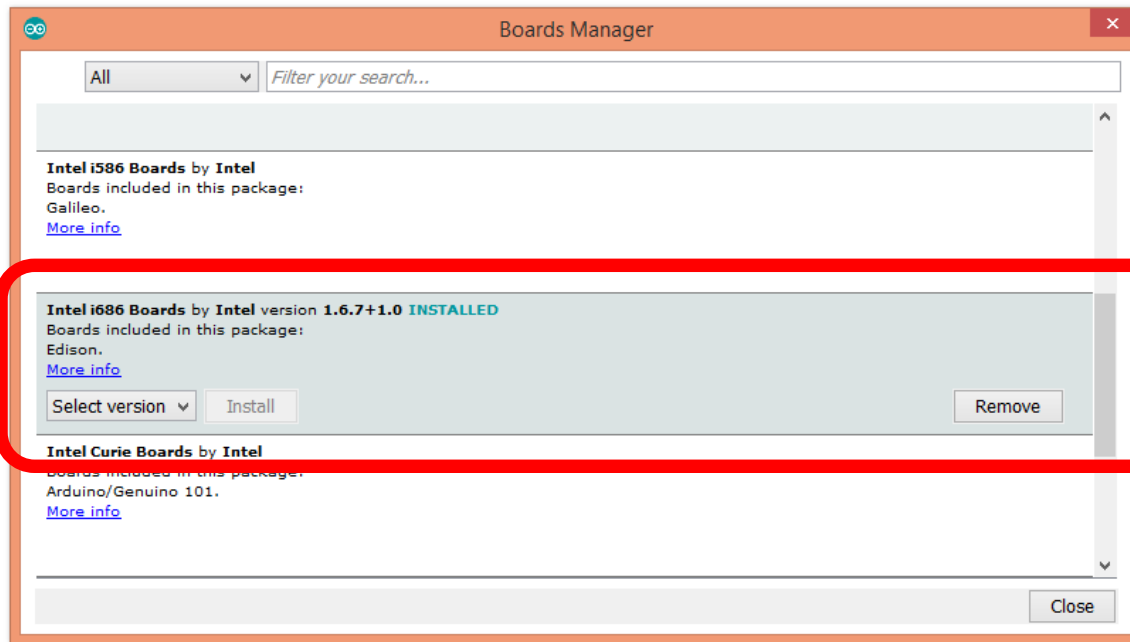
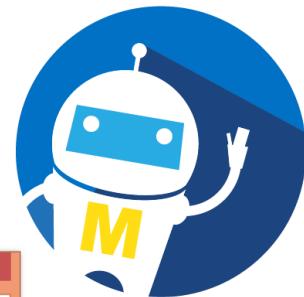
Go to Tools > Board > Boards Manager



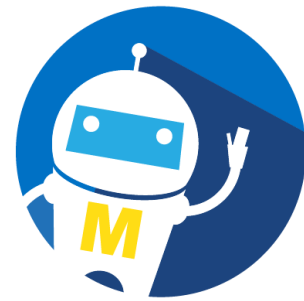
Board Manager – Intel Edison

Search for *Intel i686 Intel Edison Board by Intel* version 1.6.7 and click

INSTALL

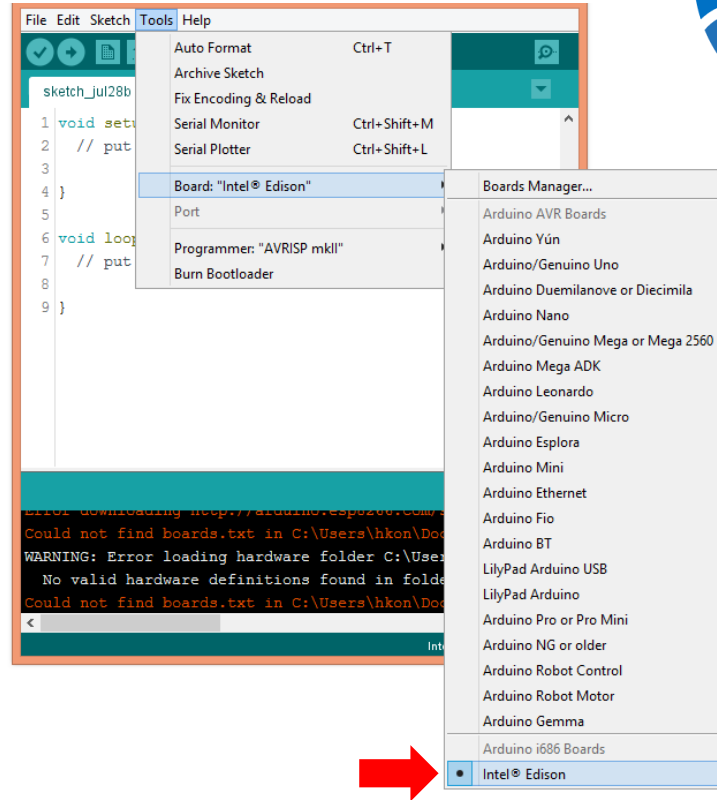


Board Manager – Intel Edison

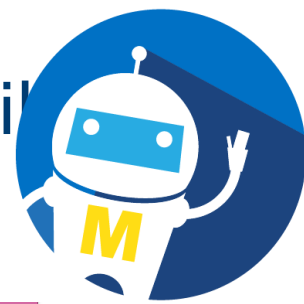


After the installation is complete, you should see a new board “Intel Edison” in the menu:

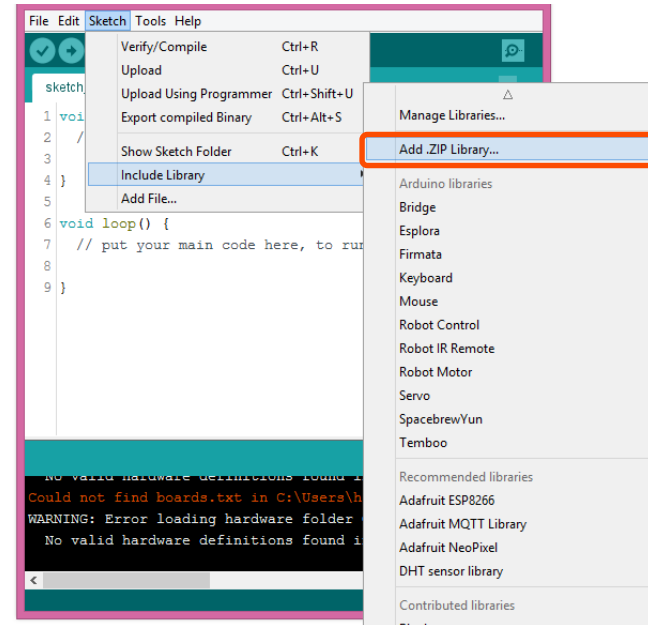
Please **MAKE SURE** you select **Intel Edison**



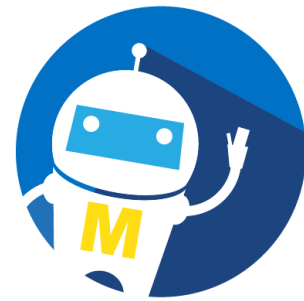
Step 4 - Library Manager – Setup necessary li



Go to Sketch > Include Library > Add .ZIP Library...



Library Manager – Setup necessary library



Go to Sketch > Include Library > Add .ZIP Library...

Go to the path where you unzip the Software Bundle and point to the **Library** folder. It should contain 5 ZIP files as shown here.

Select one of the ZIP file and click **Open**

Repeat again for the other ZIP library files until all 5 ZIP files are installed in the IDE.

Congratulations !

You are now ready to proceed to the next step in the workshop.

